

Marathwada Association For Social Services,  
**A.D. College of Education**

Sulibhanjan, Tq. Khultabad, Dist.Chhatrapati Sambhajnagar.  
Phone No. (02437) 299088 PIN Code No.431101(E-mail : dcollegekhultabad@gmail.com)

---

**Process Manual for Slow Learners and  
Advanced Learners  
(Identification & Activities)**

**Introduction:**

Within the classrooms faculty have to deal with different types of students; some are very intelligent who learn very fast and some are quite weak who learn very slowly. Therefore it is required to determine the abilities of the students in the class. Based on the ability determined, some students need only guidance and some students need a hard work and regular attention.

On the basis of their preceding exam performance, current subject performance and class observation, learning speed students can be classified in two groups; advanced learners and slow learners. Each type of students has different learning attitudes and learning habits. A faculty has to adapt a teaching methodology such that he/she may not lose the attention of the slow learners and turn off the advanced learners.

The purpose of assessment of the learning levels of the students and conduction of activities for them is:

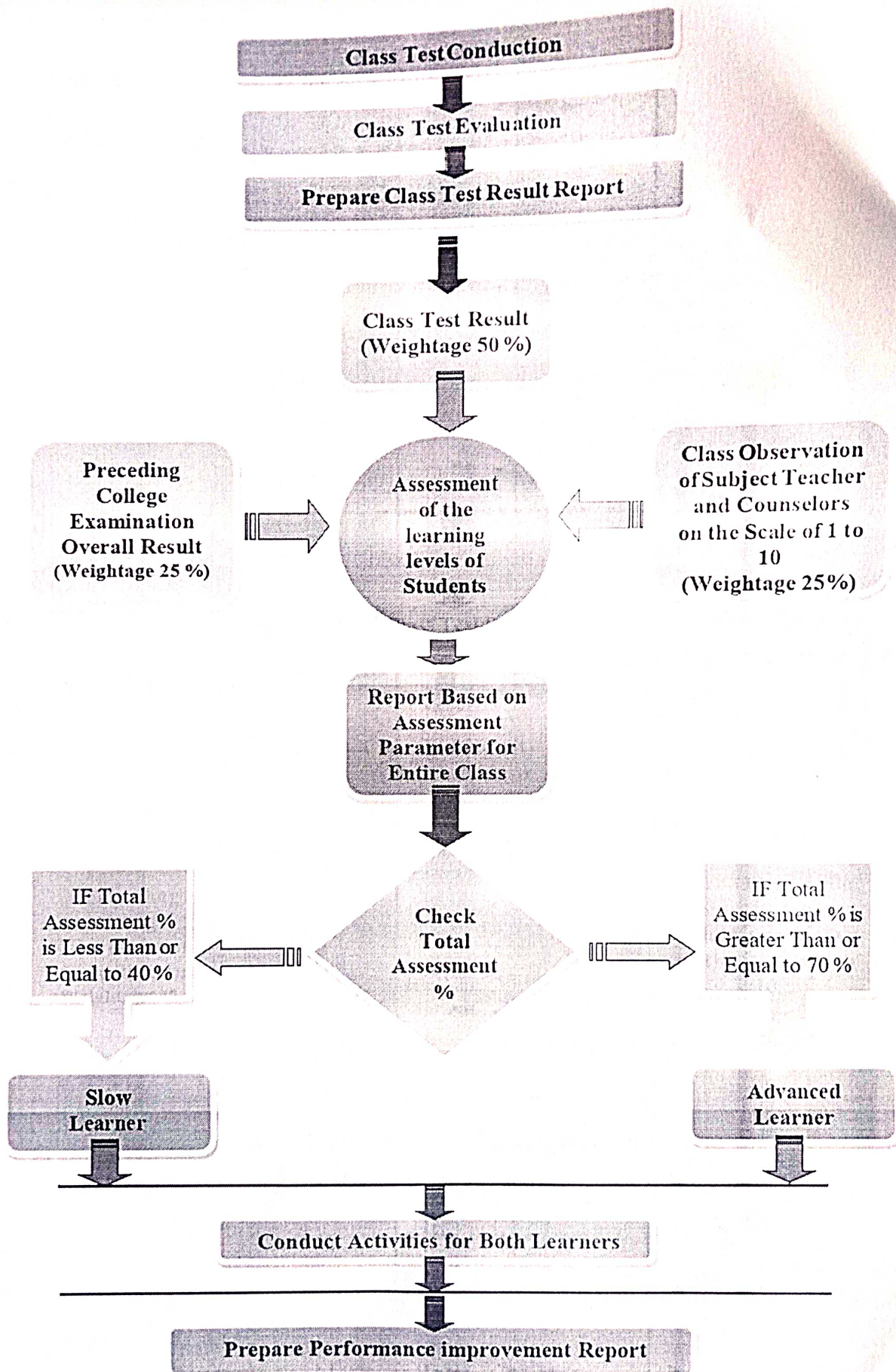
- ☐ Identification of the slow learners and advanced learners in the class
- ☐ To ensure that slow learners and advanced learners are taken care as per their needs
- ☐ To help them out for improvement in their academics.

The remainder of this manual describes the constituent parts of the slow learner and advanced learner identification process and activates for them and includes guidance on process.

**2. Process Inputs:**

To start identification of slow and advanced learner process following inputs is needed

- a. Preceding examination overall result
- b. Class test result



Process of Slow Learner and Advanced Learner

*T. S. 15/5/20*  
**PRINCIPAL**  
A.D. College of Education  
Sulibhanjan, Tq. Khultabad Dist. Aurangabad.



## ASSESSMENT OF THE LEARNING LEVELS OF THE STUDENTS:


- a) Slow learner and advanced learners would be identified for each subject separately by respective subject teacher for all the semesters.
- b) Process to identify of slow learners and advanced learners would be conducted immediately after declaration of preceding semester end exam result (SEE) or Continuous Internal Examination (CIE),
- c) Every subject teacher should conduct class test / online objective type test of their subject on syllabus covered till date or on first unit of 20 marks and duration of one hour to identify slow learners and advanced learners.
- d) Slow and advanced learners are identified based on following parameters and their weightage.

S No	Parameter	Weightage in Percentage
1	Marks obtained by student in objective type test /class test / unit test conducted for respective subject	50%
2	Academic performance of students in preceding university examination	25%
3	Subject teacher and Counselor observation	25%

## ROLES AND RESPONSIBILITIES OF SUBJECT TEACHER/ CLASS TEACHER :

- Subject Teacher is responsible for carrying out different aspects of slow learner and advanced learner identification and activities to be conducted
- Subject Teachers will be responsible for:
  - Conducting class test on mid 1 of 25 marks and duration of one hour.
  - Evaluation of class test answer sheets and preparing the class test result report of class
  - Preparing and maintaining report for whole class based on parameter decided for
  - assessment of the learning levels of the students with their weightage
  - Preparing separate list of slow and advanced learners

- Preparing schedule for extra sessions /problem solving sessions / revision sessions for slow learners.
- Conducting the sessions for slow learners as per prepared schedule.
- Maintaining the attendance of slow learners sessions.
- Preparing the list of advanced assignment or list of tasks assigned to advanced learners.
- Preparing the report after SEE result declaration of current semester which shows the improvement in performance of slow learners to close the loop.
- Maintain the all records for slow learners and advanced learners activity
- Documents to be maintained
- Cover page for Slow & Adv. learners Activity
- Report of result of class test / Internal and external test
- Report of marks obtained based on above parameter
- List of slow learners
- List of Advanced Learners
- Schedule of activity for slow learners
- Attendance record for session conducted for slow learners
- Report of performance improvement for slow learners
- List / Record of tasks given to advanced learners
- Expected Outcome
- Timely conduction of slow learners activities
- Records based on student progress and observation. aa. Improvement in SEE Results.

  
**PRINCIPAL**  
**A.D. College of Education**  
 Sulibhanjan, Tq. Khultabad Dist. Aurangabad.

c. Class observation by subject teacher and Counselor

### **3. Process of Slow learners and Advanced Learners (Identification and Activities):**

The process of assessment of the learning levels of the students and conduction of activities for them should be carried out through a systematic procedure as shown in the flow chart and explained in detail as below:



**PRINCIPAL**  
**A.D. College of Education**  
Sulibhanjan, Tq. Khultabad Dist. Aurangabad.